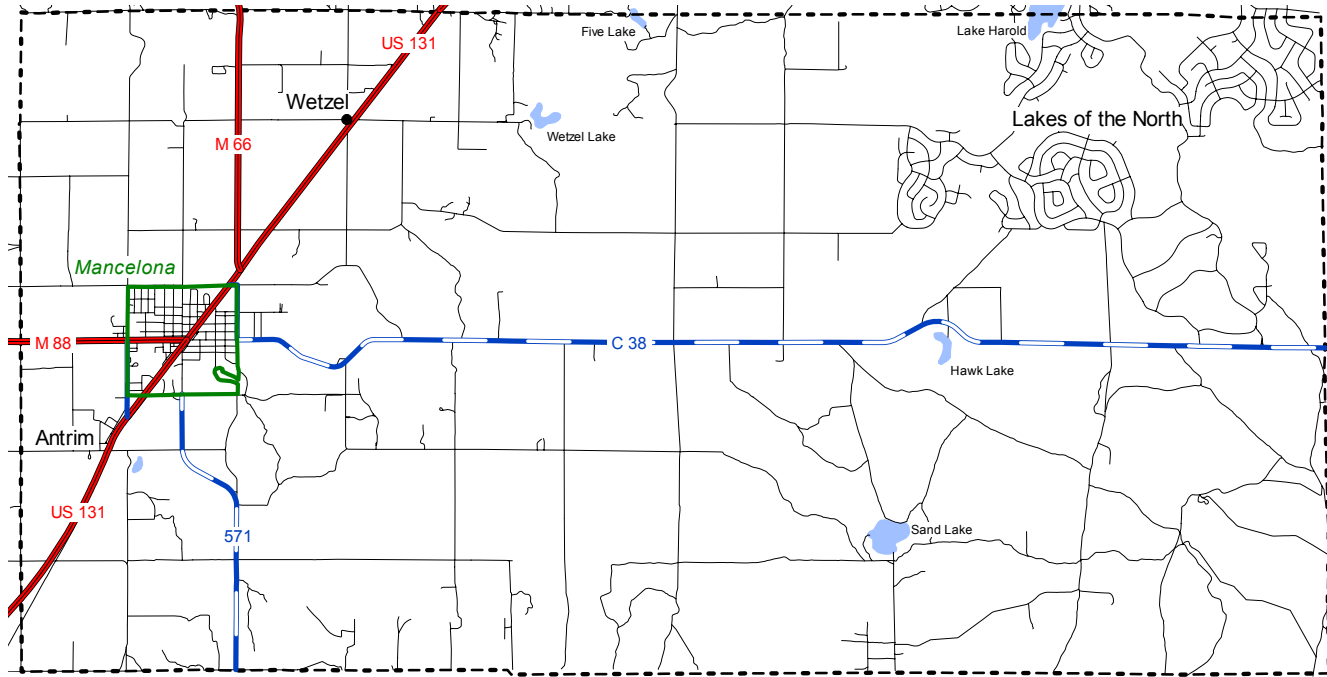
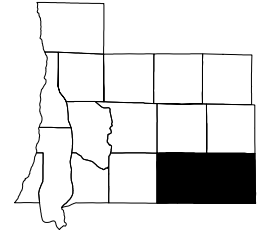


Mancelona Township
Antrim County, Michigan



Mancelona Township
TOTAL POPULATION

| | 1970-1980 | | 1980-1990 | | 1990-2000 | | |
|---------------------------|--------------|--------------|----------------|--------------|----------------|--------------|----------------|
| | 1970 Census | 1980 Census | Percent Change | 1990 Census | Percent Change | 2000 Census | Percent Change |
| MANCELONA TOWNSHIP | 2,258 | 2,720 | 20.5% | 3,173 | 16.7% | 4,100 | 29.2% |
| Antrim County | 12,612 | 16,194 | 28.4% | 18,185 | 12.3% | 23,110 | 27.1% |
| Michigan | 8,881,826 | 9,262,044 | 4.3% | 9,295,297 | 0.4% | 9,938,444 | 6.9% |

Source: United States Bureau of the Census

MANCELONA TOWNSHIP
Percent of Total Antrim County Population:

| | |
|------|-------|
| 1970 | 17.9% |
| 1980 | 16.8% |
| 1990 | 17.4% |
| 2000 | 17.7% |



Mancelona Township, Antrim County, Michigan

POPULATION BY SEX

| | 1970* | Percent of Total | 1980* | Percent of Total | 1990* | Percent of Total | 2000 | Percent of Total |
|-------------------|-------|---------------------|-------|---------------------|-------|---------------------|-------|---------------------|
| Male | 1,098 | 48.6% | 1,344 | 49.4% | 1,499 | 47.2% | 2,038 | 49.7% |
| Female | 1,160 | 51.4% | 1,376 | 50.6% | 1,674 | 52.8% | 2,062 | 50.3% |
| Age 65 and over*: | | | | | | | | |
| Male | 109 | 42.4% | 134 | 44.1% | 181 | 42.8% | 224 | 45.7% |
| Female | 148 | 57.6% | 170 | 55.9% | 242 | 57.2% | 266 | 54.3% |

Source: United States Bureau of the Census

* Derived from census sample data.

Mancelona Township, Antrim County, Michigan

POPULATION BY RACE

| | White | Black | Native American | Asian/ Pacific Islander | Other | Hispanic (of any race) |
|------------------|-------|-------|--------------------|----------------------------|-------|---------------------------|
| 1970 | 2,213 | 0 | inc in "other" | inc in "other" | 45 | 0 |
| Percent of Total | 98.0% | 0.0% | --- | --- | 2.0% | 0.0% |
| 1980 | 2,694 | 2 | 17 | 5 | 2 | 7 |
| Percent of Total | 99.0% | 0.1% | 0.6% | 0.2% | 0.1% | 0.3% |
| 1990 | 3,133 | 0 | 39 | 0 | 1 | 6 |
| Percent of Total | 98.7% | 0.0% | 1.2% | 0.0% | 0.0% | 0.2% |

| | White alone | Black alone | Native American alone | Asian/Hawaiian/ Pacific Islander alone | Some other race alone | Two or more races | Hispanic (of any race) |
|------------------|----------------|----------------|-----------------------------|--|--------------------------|----------------------|---------------------------|
| 2000 | 3,955 | 9 | 53 | 3 | 11 | 69 | 61 |
| Percent of Total | 96.5% | 0.2% | 1.3% | 0.1% | 0.3% | 1.7% | 1.5% |

Source: United States Bureau of the Census

Note: 1970 includes Asian and Pacific Islander in "Other".

Note: Due to changes in data collection methods, race data from the 2000 Census cannot be compared to race data from prior censuses.



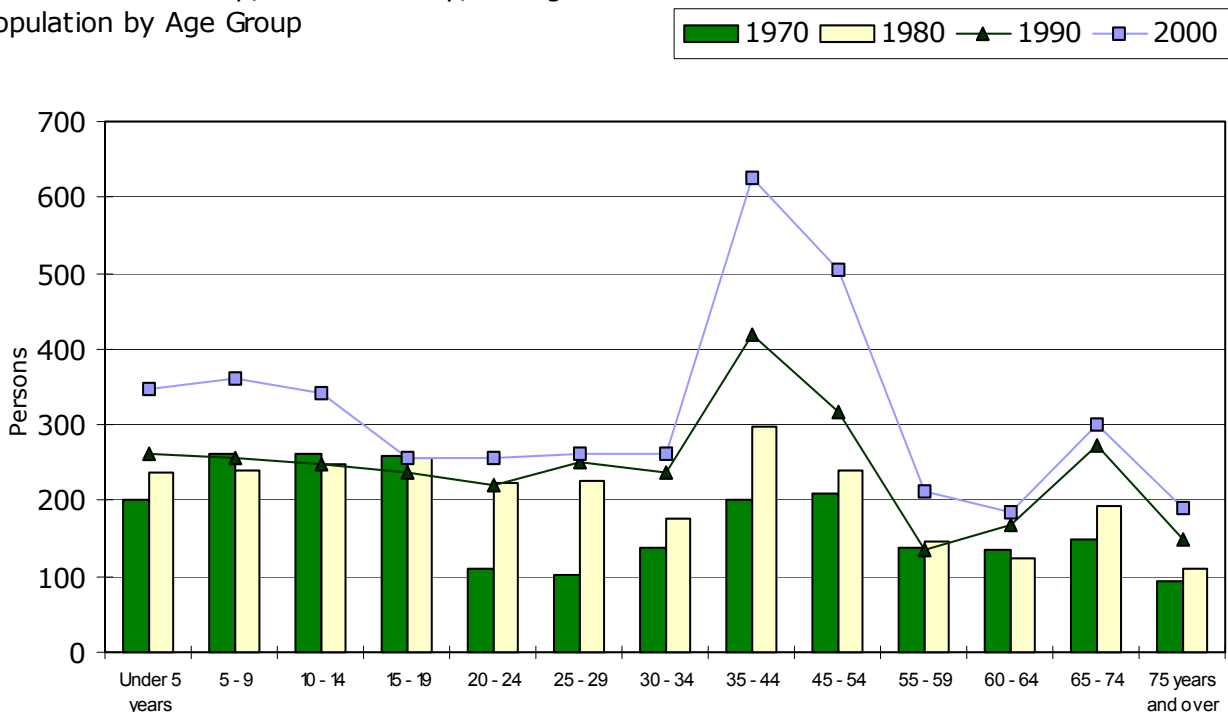
Manclona Township, Antrim County, Michigan
POPULATION BY AGE GROUP

| Age Group | 1970-1980 | | 1980-1990 | | 1990-2000 | | |
|-------------------|-----------|-------|----------------|-------|----------------|-------|----------------|
| | 1970* | 1980 | Percent Change | 1990 | Percent Change | 2000 | Percent Change |
| Under 5 years | 200 | 236 | 18.0% | 262 | 11.0% | 346 | 32.1% |
| 5 - 9 | 263 | 241 | -8.4% | 255 | 5.8% | 362 | 42.0% |
| 10 - 14 | 262 | 248 | -5.3% | 249 | 0.4% | 342 | 37.3% |
| 15 - 19 | 258 | 256 | -0.8% | 236 | -7.8% | 257 | 8.9% |
| 20 - 24 | 110 | 224 | 103.6% | 220 | -1.8% | 255 | 15.9% |
| 25 - 29 | 102 | 226 | 121.6% | 250 | 10.6% | 261 | 4.4% |
| 30 - 34 | 137 | 177 | 29.2% | 238 | 34.5% | 261 | 9.7% |
| 35 - 44 | 200 | 298 | 49.0% | 419 | 40.6% | 625 | 49.2% |
| 45 - 54 | 209 | 241 | 15.3% | 317 | 31.5% | 505 | 59.3% |
| 55 - 59 | 139 | 145 | 4.3% | 136 | -6.2% | 212 | 55.9% |
| 60 - 64 | 135 | 124 | -8.1% | 168 | 35.5% | 184 | 9.5% |
| 65 - 74 | 150 | 194 | 29.3% | 273 | 40.7% | 301 | 10.3% |
| 75 years and over | 93 | 110 | 18.3% | 150 | 36.4% | 189 | 26.0% |
| TOTAL | 2,258 | 2,720 | 20.5% | 3,173 | 16.7% | 4,100 | 29.2% |
| Median age | N/A | 28.4 | | 32.4 | | 34.3 | |

Source: United States Bureau of the Census

* Derived from census sample data.

Manclona Township, Antrim County, Michigan
Population by Age Group



Mancelona Township, Antrim County, Michigan

MARITAL STATUS

persons 15 years of age and over

| | 1970* | | | 1980 | | |
|--------------------------|-------|--------|-------|-------|--------|-------|
| | Male | Female | Total | Male | Female | Total |
| Never married | 242 | 219 | 461 | 250 | 158 | 408 |
| Married except separated | 600 | 587 | 1,187 | 635 | 637 | 1,272 |
| Married but separated | 6 | 10 | 16 | 7 | 23 | 30 |
| Widowed | 27 | 110 | 137 | 27 | 119 | 146 |
| Divorced | 6 | 33 | 39 | 52 | 87 | 139 |
| Total | 881 | 959 | 1,840 | 971 | 1,024 | 1,995 |
| Percent married | 68.1% | 61.2% | 64.5% | 65.4% | 62.2% | 63.8% |

| | 1990 | | | 2000** | | |
|--------------------------|-------|--------|-------|--------|--------|-------|
| | Male | Female | Total | Male | Female | Total |
| Never married | 290 | 228 | 518 | 385 | 310 | 695 |
| Married except separated | 695 | 701 | 1,396 | 903 | 856 | 1,759 |
| Married but separated | 17 | 31 | 48 | 19 | 31 | 50 |
| Widowed | 32 | 156 | 188 | 62 | 173 | 235 |
| Divorced | 98 | 159 | 257 | 213 | 197 | 410 |
| Total | 1,132 | 1,275 | 2,407 | 1,582 | 1,567 | 3,149 |
| Percent married | 61.4% | 55.0% | 58.0% | 57.1% | 54.6% | 55.9% |

Source: United States Bureau of the Census

* 1970 data is persons 14 years of age and over and is derived from census sample data.

** Census sample data.

Mancelona Township, Antrim County, Michigan

HOUSEHOLDS

| | 1970-1980 | | 1980-1990 | | 1990-2000 | | |
|------------------------------------|-----------|-------|----------------|-------|----------------|-------|----------------|
| | 1970 | 1980 | Percent Change | 1990 | Percent Change | 2000 | Percent Change |
| Number of households | 774 | 939 | 21.3% | 1,181 | 25.8% | 1,511 | 27.9% |
| Persons per household | 2.9 | 2.9 | 0.0% | 2.7 | -6.9% | 2.7 | 0.0% |
| Married couple families | N/A | 613 | N/A | 676 | 10.3% | 822 | 21.6% |
| --as a percent of total households | N/A | 65.3% | N/A | 57.2% | -12.3% | 54.4% | -5.0% |

Source: United States Bureau of the Census



Mancelona Township, Antrim County, Michigan
 PERSONS IN HOUSEHOLD

| | 1970 Percent of Total Households | 1980 Percent of Total Households | 1970-1980 Absolute Change | 1990 Percent of Total Households | 1980-1990 Absolute Change | 2000 Percent of Total Households | 1990-2000 Absolute Change |
|---------------------|---|---|---------------------------------|---|---------------------------------|---|---------------------------------|
| One person | 15.4% | 19.5% | 4.1% | 21.5% | 2.0% | 22.5% | 1.0% |
| Two persons | 32.4% | 30.9% | -1.5% | 34.0% | 3.1% | 35.0% | 1.0% |
| Three persons | 18.1% | 17.6% | -0.5% | 17.4% | -0.2% | 14.0% | -3.3% |
| Four persons | 9.9% | 16.1% | 6.1% | 15.3% | -0.8% | 15.9% | 0.5% |
| Five persons | 7.1% | 8.7% | 1.6% | 7.8% | -0.9% | 8.1% | 0.3% |
| Six or more persons | 17.1% | 7.2% | -9.8% | 4.1% | -3.2% | 4.5% | 0.5% |

Source: United States Bureau of the Census

Mancelona Township, Antrim County, Michigan
 NATIVITY AND PLACE OF BIRTH

| | 1970* | Percent of Total | 1980* | Percent of Total | 1990* | Percent of Total | 2000* | Percent of Total |
|------------------------------|-------|------------------------|-------|------------------------|-------|------------------------|-------|------------------------|
| Native | 2,147 | 95.1% | 2,698 | 99.2% | 3,153 | 99.4% | 4,042 | 98.6% |
| --Born in state of residence | 1,844 | 81.7% | 2,318 | 85.2% | 2,752 | 86.7% | 3,461 | 84.4% |
| --Born in different state | 276 | 12.2% | 365 | 13.4% | 396 | 12.5% | 579 | 14.1% |
| --Born abroad, at sea, etc. | 27 | 1.2% | 15 | 0.6% | 5 | 0.2% | 2 | 0.0% |
| Foreign born | 111 | 4.9% | 22 | 0.8% | 20 | 0.6% | 57 | 1.4% |
| Total persons | 2,258 | | 2,720 | | 3,173 | | 4,099 | |

Source: United States Bureau of the Census

* Derived from census sample data.



Mancelona Township, Antrim County, Michigan
 YEARS OF SCHOOL COMPLETED
 persons 25 years of age and over

| | 1970-1980 | | 1980-1990 | | 1990-2000 | | |
|--|-----------|-------|----------------|-------|----------------|-------|----------------|
| | 1970* | 1980* | Percent Change | 1990* | Percent Change | 2000* | Percent Change |
| Less than 9th grade | 363 | 340 | -6.3% | 205 | -39.7% | 133 | -35.1% |
| 9th to 12th grade, no diploma | 304 | 397 | 30.6% | 394 | -0.8% | 577 | 46.4% |
| High school graduate, no college | 323 | 899 | 178.3% | 954 | 6.1% | 1,193 | 25.1% |
| Some college through professional degree | 177 | 263 | 48.6% | 398 | 51.3% | 635 | 59.5% |
| Total persons | 1,167 | 1,899 | 62.7% | 1,951 | 2.7% | 2,538 | 30.1% |
| Percent high school graduates, no college | 27.7% | 47.3% | | 48.9% | | 47.0% | |
| Percent some college through professional degree | 15.2% | 13.8% | | 20.4% | | 25.0% | |
| Percent school dropouts | 57.2% | 38.8% | | 30.7% | | 28.0% | |

Source: United States Bureau of the Census

* Derived from census sample data.

Mancelona Township, Antrim County, Michigan
 ANNUAL AVERAGE LABOR FORCE STATISTICS

| | 1970 - 1980 | | 1980 - 1990 | | 1990 - 2000 | | |
|----------------------------|-------------|-------|-----------------|-------|-----------------|-------|-----------------|
| | 1970 | 1980 | Percent Change | 1990 | Percent Change | 2000 | Percent Change |
| Total Civilian Labor Force | 1,125 | 1,250 | 11.1% | 1,500 | 20.0% | 1,850 | 23.3% |
| Employed | 1,025 | 1,025 | 0.0% | 1,300 | 26.8% | 1,725 | 32.7% |
| Unemployed | 100 | 225 | 125.0% | 200 | -11.1% | 125 | -37.5% |
| | | | Absolute Change | | Absolute Change | | Absolute Change |
| Unemployment Rate | 9.4% | 17.4% | 8.0% | 13.5% | -3.9% | 7.1% | -6.4% |

Source: Michigan Dept. of Career Development/ESA/OLMI, Labor Market Analysis Section



Mancelona Township, Antrim County, Michigan
INCOME

| | 1979 | | 1989 | | 1979-1989 | 1989-1999 | |
|-------------------------|----------|---------------------|----------|---------------------|------------------|-------------|------------------|
| | actual | ...in 1999 dollars* | actual | ...in 1999 dollars* | Percent Change** | 1999 actual | Percent Change** |
| Median household income | \$11,824 | \$27,133 | \$19,640 | \$26,387 | -2.7% | \$30,858 | 16.9% |
| Median family income | \$13,457 | \$30,881 | \$21,979 | \$29,530 | -4.4% | \$33,045 | 11.9% |
| Per capita income | \$4,926 | \$11,304 | \$8,615 | \$11,575 | 2.4% | \$13,574 | 17.3% |

Source: United States Bureau of the Census,
 * Bureau of Labor Statistics, Consumer Price Index; Series CUUR0000SA0; U.S. city average; all items; Base Period: 1982-84=100--
 1979=72.6; 1989=124.0; 1999=166.6

** Based on values adjusted to 1999 dollars.

