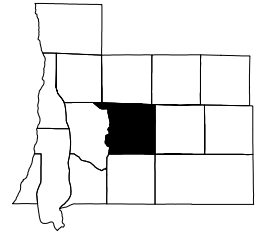


Kearney Township
Antrim County,
Michigan



Kearney Township
TOTAL POPULATION

	1970-1980		1980-1990		1990-2000		
	1970 Census	1980 Census	Percent Change	1990 Census	Percent Change	2000 Census	Percent Change
KEARNEY TOWNSHIP	997	1,241	24.5%	1,487	19.8%	1,764	18.6%
Antrim County	12,612	16,194	28.4%	18,185	12.3%	23,110	27.1%
Michigan	8,881,826	9,262,044	4.3%	9,295,297	0.4%	9,938,444	6.9%

Source: United States Bureau of the Census

KEARNEY TOWNSHIP
Percent of Total Antrim County Population:

1970	7.9%
1980	7.7%
1990	8.2%
2000	7.6%



Kearney Township, Antrim County, Michigan

POPULATION BY SEX

	1970*	Percent of Total	1980*	Percent of Total	1990*	Percent of Total	2000	Percent of Total
Male	501	50.3%	595	47.9%	722	48.6%	845	47.9%
Female	496	49.7%	646	52.1%	765	51.4%	919	52.1%
Age 65 and over*:								
Male	45	26.8%	87	35.8%	119	38.1%	141	38.6%
Female	123	73.2%	156	64.2%	193	61.9%	224	61.4%

Source: United States Bureau of the Census

* Derived from census sample data.

Kearney Township, Antrim County, Michigan

POPULATION BY RACE

	White	Black	Native American	Asian/ Pacific Islander	Other	Hispanic (of any race)
1970	997	0	inc in "other"	inc in "other"	0	0
Percent of Total	100.0%	0.0%	---	---	0.0%	0.0%
1980	1,237	0	3	1	0	1
Percent of Total	99.7%	0.0%	0.2%	0.1%	0.0%	0.1%
1990	1,459	2	24	1	1	5
Percent of Total	98.1%	0.1%	1.6%	0.1%	0.1%	0.3%

	White alone	Black alone	Native American alone	Asian/Hawaiian/ Pacific Islander alone	Some other race alone	Two or more races	Hispanic (of any race)
2000	1,714	5	10	1	7	27	28
Percent of Total	97.2%	0.3%	0.6%	0.1%	0.4%	1.5%	1.6%

Source: United States Bureau of the Census

Note: 1970 includes Asian and Pacific Islander in "Other".

Note: Due to changes in data collection methods, race data from the 2000 Census cannot be compared to race data from prior censuses.



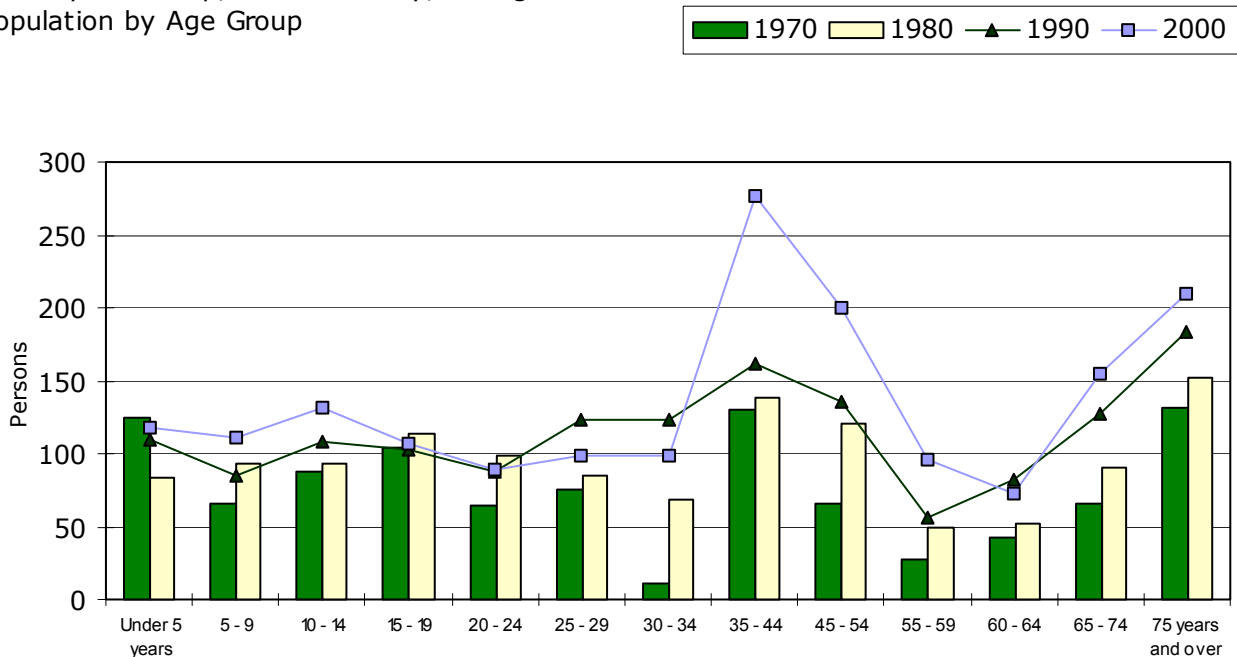
Kearney Township, Antrim County, Michigan
POPULATION BY AGE GROUP

Age Group	1970-1980		1980-1990		1990-2000		
	1970*	1980	Percent Change	1990	Percent Change	2000	Percent Change
Under 5 years	125	84	-32.8%	110	31.0%	118	7.3%
5 - 9	66	93	40.9%	85	-8.6%	111	30.6%
10 - 14	88	93	5.7%	108	16.1%	131	21.3%
15 - 19	104	114	9.6%	103	-9.6%	107	3.9%
20 - 24	65	99	52.3%	87	-12.1%	89	2.3%
25 - 29	75	85	13.3%	123	44.7%	98	-20.3%
30 - 34	11	69	527.3%	123	78.3%	99	-19.5%
35 - 44	130	138	6.2%	162	17.4%	277	71.0%
45 - 54	66	121	83.3%	136	12.4%	200	47.1%
55 - 59	28	50	78.6%	56	12.0%	96	71.4%
60 - 64	42	52	23.8%	82	57.7%	73	-11.0%
65 - 74	66	91	37.9%	128	40.7%	155	21.1%
75 years and over	131	152	16.0%	184	21.1%	210	14.1%
TOTAL	997	1,241	24.5%	1,487	19.8%	1,764	18.6%
Median age	N/A	33.8		35.2		39.9	

Source: United States Bureau of the Census

* Derived from census sample data.

Kearney Township, Antrim County, Michigan
Population by Age Group



Kearney Township, Antrim County, Michigan

MARITAL STATUS

persons 15 years of age and over

	1970*			1980		
	Male	Female	Total	Male	Female	Total
Never married	111	45	156	112	82	194
Married except separated	174	207	381	280	273	553
Married but separated	6	0	6	1	5	6
Widowed	22	75	97	28	120	148
Divorced	6	0	6	31	39	70
Total	319	327	646	452	519	971
Percent married	54.5%	63.3%	59.0%	61.9%	52.6%	57.0%

	1990			2000**		
	Male	Female	Total	Male	Female	Total
Never married	142	109	251	120	123	243
Married except separated	320	322	642	542	529	1,071
Married but separated	10	11	21	7	11	18
Widowed	45	119	164	15	76	91
Divorced	40	66	106	68	89	157
Total	557	627	1,184	752	828	1,580
Percent married	57.5%	51.4%	54.2%	72.1%	63.9%	67.8%

Source: United States Bureau of the Census

* 1970 data is persons 14 years of age and over and is derived from census sample data.

** Census sample data.

Kearney Township, Antrim County, Michigan

HOUSEHOLDS

	1970-1980		1980-1990		1990-2000		
	1970	1980	Percent Change	1990	Percent Change	2000	Percent Change
Number of households	234	420	79.5%	542	29.0%	661	22.0%
Persons per household	4.3	2.7	-37.2%	2.5	-7.4%	2.4	-3.6%
Married couple families	N/A	260	N/A	298	14.6%	359	20.5%
--as a percent of total households	N/A	61.9%	N/A	55.0%	-11.2%	54.3%	-1.2%

Source: United States Bureau of the Census



Kearney Township, Antrim County, Michigan
 PERSONS IN HOUSEHOLD

	1970 Percent of Total Households	1980 Percent of Total Households	1970-1980 Absolute Change	1990 Percent of Total Households	1980-1990 Absolute Change	2000 Percent of Total Households	1990-2000 Absolute Change
One person	14.5%	23.1%	8.6%	26.8%	3.7%	25.9%	-0.9%
Two persons	22.6%	32.6%	10.0%	36.3%	3.7%	41.0%	4.7%
Three persons	24.4%	17.9%	-6.5%	13.3%	-4.6%	13.2%	-0.1%
Four persons	12.0%	14.0%	2.1%	13.8%	-0.2%	13.8%	0.0%
Five persons	12.4%	8.1%	-4.3%	6.6%	-1.5%	3.7%	-2.9%
Six or more persons	14.1%	4.3%	-9.8%	3.1%	-1.1%	2.4%	-0.8%

Source: United States Bureau of the Census

Kearney Township, Antrim County, Michigan
 NATIVITY AND PLACE OF BIRTH

	1970*	Percent of Total	1980*	Percent of Total	1990*	Percent of Total	2000*	Percent of Total
Native	997	100.0%	1,197	96.5%	1,463	98.4%	1,735	98.4%
--Born in state of residence	883	88.6%	1,027	82.8%	1,247	83.9%	1,456	82.5%
--Born in different state	114	11.4%	168	13.5%	213	14.3%	265	15.0%
--Born abroad, at sea, etc.	0	0.0%	2	0.2%	3	0.2%	14	0.8%
Foreign born	0	0.0%	44	3.5%	24	1.6%	29	1.6%
Total persons	997		1,241		1,487		1,764	

Source: United States Bureau of the Census

* Derived from census sample data.



Kearney Township, Antrim County, Michigan
YEARS OF SCHOOL COMPLETED
persons 25 years of age and over

	1970-1980		1980-1990		1990-2000		
	1970*	1980*	Percent Change	1990*	Percent Change	2000*	Percent Change
Less than 9th grade	124	148	19.4%	125	-15.5%	47	-62.4%
9th to 12th grade, no diploma	137	122	-10.9%	131	7.4%	186	42.0%
High school graduate, no college	199	342	71.9%	350	2.3%	426	21.7%
Some college through professional degree	88	275	212.5%	388	41.1%	549	41.5%
Total persons	548	887	61.9%	994	12.1%	1,208	21.5%
Percent high school graduates, no college	36.3%	38.6%		35.2%		35.3%	
Percent some college through professional degree	16.1%	31.0%		39.0%		45.4%	
Percent school dropouts	47.6%	30.4%		25.8%		19.3%	

Source: United States Bureau of the Census

* Derived from census sample data.

Kearney Township, Antrim County, Michigan
ANNUAL AVERAGE LABOR FORCE STATISTICS

	1970 - 1980		1980 - 1990		1990 - 2000		
	1970	1980	Percent Change	1990	Percent Change	2000	Percent Change
Total Civilian Labor Force	350	600	71.4%	675	12.5%	825	22.2%
Employed	325	500	53.8%	600	20.0%	775	29.2%
Unemployed	25	100	300.0%	75	-25.0%	50	-33.3%
			Absolute Change		Absolute Change		Absolute Change
Unemployment Rate	4.4%	14.9%	10.5%	10.0%	-4.9%	5.1%	-4.9%

Source: Michigan Dept. of Career Development/ESA/OLMI, Labor Market Analysis Section



Kearney Township, Antrim County, Michigan
INCOME

	1979		1989		1979-1989	1989-1999	
	actual	...in 1999 dollars*	actual	...in 1999 dollars*	Percent Change**	1999 actual	Percent Change**
Median household income	\$13,029	\$29,899	\$21,176	\$28,451	-4.8%	\$36,058	26.7%
Median family income	\$17,159	\$39,376	\$27,500	\$36,948	-6.2%	\$45,677	23.6%
Per capita income	\$5,823	\$13,362	\$10,487	\$14,090	5.4%	\$19,106	35.6%

Source: United States Bureau of the Census,
* Bureau of Labor Statistics, Consumer Price Index; Series CUUR0000SA0; U.S. city average; all items; Base Period: 1982-84=100--
1979=72.6; 1989=124.0; 1999=166.6

** Based on values adjusted to 1999 dollars.

