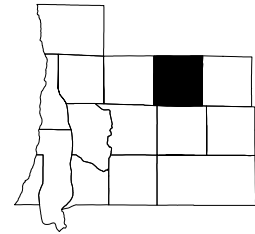


Jordan Township  
Antrim County, Michigan



Jordan Township  
TOTAL POPULATION

	1970-1980		1980-1990		1990-2000		
	1970 Census	1980 Census	Percent Change	1990 Census	Percent Change	2000 Census	Percent Change
<b>JORDAN TOWNSHIP</b>	<b>303</b>	<b>410</b>	<b>35.3%</b>	<b>583</b>	<b>42.2%</b>	<b>875</b>	<b>50.1%</b>
Antrim County	12,612	16,194	28.4%	18,185	12.3%	23,110	27.1%
Michigan	8,881,826	9,262,044	4.3%	9,295,297	0.4%	9,938,444	6.9%

Source: United States Bureau of the Census

JORDAN TOWNSHIP  
Percent of Total Antrim County Population:

1970	2.4%
1980	2.5%
1990	3.2%
2000	3.8%



Jordan Township, Antrim County, Michigan  
POPULATION BY SEX

	1970*	Percent of Total	1980*	Percent of Total	1990*	Percent of Total	2000	Percent of Total
Male	128	42.2%	210	51.2%	307	52.7%	441	50.4%
Female	175	57.8%	200	48.8%	276	47.3%	434	49.6%
Age 65 and over*:								
Male	27	100.0%	28	52.8%	37	56.1%	41	53.9%
Female	0	0.0%	25	47.2%	29	43.9%	35	46.1%

Source: United States Bureau of the Census

\* Derived from census sample data.

Jordan Township, Antrim County, Michigan  
POPULATION BY RACE

	White	Black	Native American	Asian/ Pacific Islander	Other	Hispanic (of any race)	
1970	303	0	inc in "other"	inc in "other"	0	0	
Percent of Total	100.0%	0.0%	---	---	0.0%	0.0%	
1980	408	0	2	0	0	4	
Percent of Total	99.5%	0.0%	0.5%	0.0%	0.0%	1.0%	
1990	581	0	2	0	0	1	
Percent of Total	99.7%	0.0%	0.3%	0.0%	0.0%	0.2%	
	White alone	Black alone	Native American alone	Asian/Hawaiian/ Pacific Islander alone	Some other race alone	Two or more races	Hispanic (of any race)
2000	840	1	16	6	0	12	10
Percent of Total	96.0%	0.1%	1.8%	0.7%	0.0%	1.4%	1.1%

Source: United States Bureau of the Census

Note: 1970 includes Asian and Pacific Islander in "Other".

Note: Due to changes in data collection methods, race data from the 2000 Census cannot be compared to race data from prior censuses.



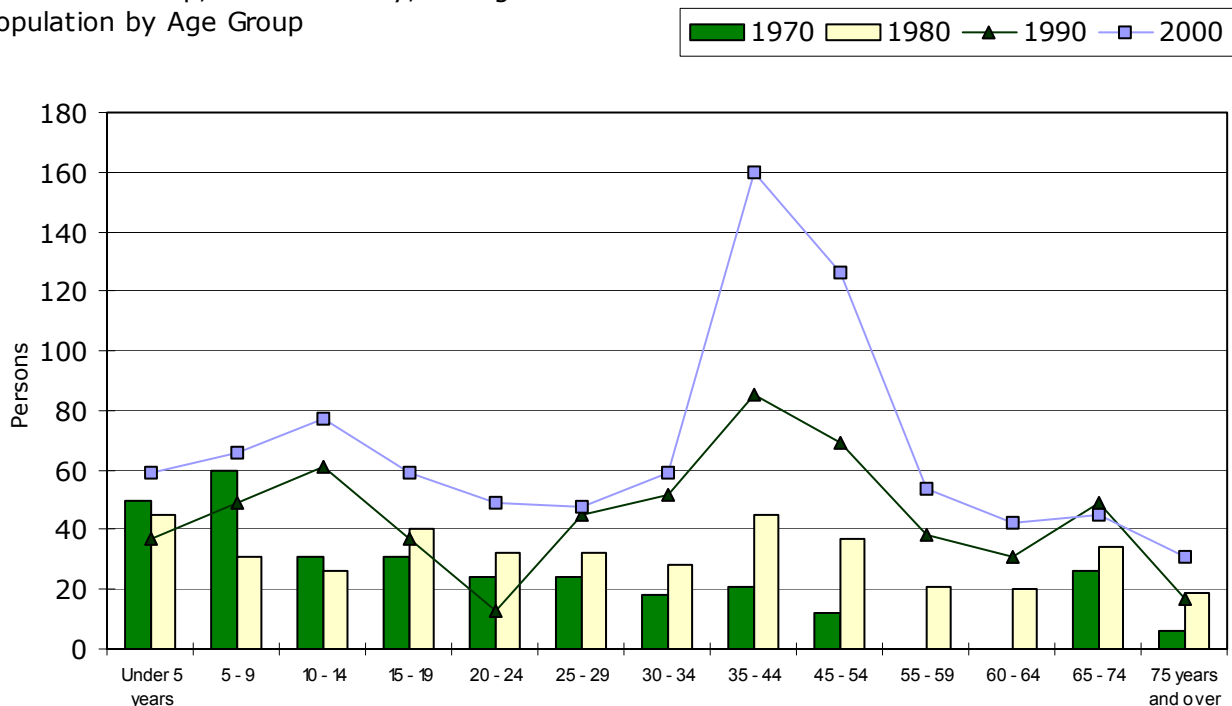
Jordan Township, Antrim County, Michigan  
POPULATION BY AGE GROUP

Age Group	1970-1980		1980-1990		1990-2000		
	1970*	1980	Percent Change	1990	Percent Change	2000	Percent Change
Under 5 years	50	45	-10.0%	37	-17.8%	59	59.5%
5 - 9	60	31	-48.3%	49	58.1%	66	34.7%
10 - 14	31	26	-16.1%	61	134.6%	77	26.2%
15 - 19	31	40	29.0%	37	-7.5%	59	59.5%
20 - 24	24	32	33.3%	13	-59.4%	49	276.9%
25 - 29	24	32	33.3%	45	40.6%	48	6.7%
30 - 34	18	28	55.6%	52	85.7%	59	13.5%
35 - 44	21	45	114.3%	85	88.9%	160	88.2%
45 - 54	12	37	208.3%	69	86.5%	126	82.6%
55 - 59	0	21	--	38	81.0%	54	42.1%
60 - 64	0	20	--	31	55.0%	42	35.5%
65 - 74	26	34	30.8%	49	44.1%	45	-8.2%
75 years and over	6	19	216.7%	17	-10.5%	31	82.4%
TOTAL	303	410	35.3%	583	42.2%	875	50.1%
Median age	N/A	29.8		34.8		36.3	

Source: United States Bureau of the Census

\* Derived from census sample data.

Jordan Township, Antrim County, Michigan  
Population by Age Group



Jordan Township, Antrim County, Michigan

MARITAL STATUS

persons 15 years of age and over

	1970*			1980		
	Male	Female	Total	Male	Female	Total
Never married	12	20	32	31	25	56
Married except separated	47	55	102	110	111	221
Married but separated	0	0	0	1	1	2
Widowed	0	3	3	5	14	19
Divorced	0	4	4	7	3	10
Total	59	82	141	154	154	308
Percent married	79.7%	67.1%	72.3%	71.4%	72.1%	71.8%

	1990			2000**		
	Male	Female	Total	Male	Female	Total
Never married	44	29	73	105	65	170
Married except separated	155	157	312	215	213	428
Married but separated	4	2	6	3	4	7
Widowed	6	16	22	10	14	24
Divorced	12	11	23	52	38	90
Total	221	215	436	385	334	719
Percent married	70.1%	73.0%	71.6%	55.8%	63.8%	59.5%

Source: United States Bureau of the Census

\* 1970 data is persons 14 years of age and over and is derived from census sample data.

\*\* Census sample data.

Jordan Township, Antrim County, Michigan

HOUSEHOLDS

	1970-1980		1980-1990		1990-2000		
	1970	1980	Percent Change	1990	Percent Change	2000	Percent Change
Number of households	54	141	161.1%	206	46.1%	323	56.8%
Persons per household	5.6	2.9	-48.2%	2.8	-3.4%	2.7	-3.2%
Married couple families	N/A	108	N/A	153	41.7%	196	28.1%
--as a percent of total households	N/A	76.6%	N/A	74.3%	-3.0%	60.7%	-18.3%

Source: United States Bureau of the Census



Jordan Township, Antrim County, Michigan  
 PERSONS IN HOUSEHOLD

	1970 Percent of Total Households	1980 Percent of Total Households	1970-1980 Absolute Change	1990 Percent of Total Households	1980-1990 Absolute Change	2000 Percent of Total Households	1990-2000 Absolute Change
One person	0.0%	14.9%	14.9%	14.1%	-0.8%	19.9%	5.9%
Two persons	29.6%	31.9%	2.3%	38.8%	6.9%	35.2%	-3.6%
Three persons	9.3%	20.6%	11.3%	17.5%	-3.1%	13.4%	-4.1%
Four persons	9.3%	19.1%	9.9%	15.5%	-3.6%	19.9%	4.4%
Five persons	0.0%	8.5%	8.5%	10.2%	1.7%	7.5%	-2.7%
Six or more persons	51.9%	5.0%	-46.9%	3.9%	-1.1%	4.0%	0.2%

Source: United States Bureau of the Census

Jordan Township, Antrim County, Michigan  
 NATIVITY AND PLACE OF BIRTH

	Percent of 1970*		Percent of 1980*		Percent of 1990*		Percent of 2000*	
	Total		Total		Total		Total	
Native	256	84.5%	405	98.8%	574	98.5%	866	99.0%
--Born in state of residence	252	83.0%	351	85.6%	512	87.8%	746	85.3%
--Born in different state	4	1.4%	54	13.2%	58	9.9%	120	13.7%
--Born abroad, at sea, etc.	0	0.0%	0	0.0%	4	0.7%	0	0.0%
Foreign born	47	15.5%	5	1.2%	9	1.5%	9	1.0%
Total persons	303		410		583		875	

Source: United States Bureau of the Census

\* Derived from census sample data.



Jordan Township, Antrim County, Michigan  
 YEARS OF SCHOOL COMPLETED  
 persons 25 years of age and over

	1970-1980		1980-1990		1990-2000		
	1970*	1980*	Percent Change	1990*	Percent Change	2000*	Percent Change
Less than 9th grade	36	55	52.8%	35	-36.4%	20	-42.9%
9th to 12th grade, no diploma	24	54	125.0%	80	48.1%	81	1.3%
High school graduate, no college	46	146	217.4%	164	12.3%	238	45.1%
Some college through professional degree	0	43	--	107	148.8%	226	111.2%
Total persons	106	298	181.1%	386	29.5%	565	46.4%
Percent high school graduates, no college	43.4%	49.0%		42.5%		42.1%	
Percent some college through professional degree	0.0%	14.4%		27.7%		40.0%	
Percent school dropouts	56.6%	36.6%		29.8%		17.9%	

Source: United States Bureau of the Census

\* Derived from census sample data.

Jordan Township, Antrim County, Michigan  
 LABOR FORCE

	1970 - 1980		1980 - 1990		1990 - 2000		
	1970	1980	Percent Change	1990	Percent Change	2000	Percent Change
Total Civilian Labor Force	75	175	133.3%	275	57.1%	350	27.3%
Employed	50	125	150.0%	250	100.0%	325	30.0%
Unemployed	25	50	100.0%	25	-50.0%	25	0.0%
Unemployment Rate	40.7%	24.4%	Absolute Change -16.3%	12.3%	Absolute Change -12.1%	6.4%	Absolute Change -5.9%

Source: Michigan Dept. of Career Development/ESA/OLMI, Labor Market Analysis Section



Jordan Township, Antrim County, Michigan  
INCOME

	1979		1989		1979-1989 Percent Change**	1999 actual	1989-1999 Percent Change**
	actual	...in 1999 dollars*	actual	...in 1999 dollars*			
Median household income	\$13,500	\$30,979	\$24,079	\$32,351	4.4%	\$38,229	18.2%
Median family income	\$17,708	\$40,636	\$24,417	\$32,805	-19.3%	\$41,250	25.7%
Per capita income	\$5,136	\$11,786	\$11,154	\$14,986	27.2%	\$16,420	9.6%

Source: United States Bureau of the Census,  
\* Bureau of Labor Statistics, Consumer Price Index; Series CUUR0000SA0; U.S. city average; all items; Base Period: 1982-84=100--  
1979=72.6; 1989=124.0; 1999=166.6

\*\* Based on values adjusted to 1999 dollars.

