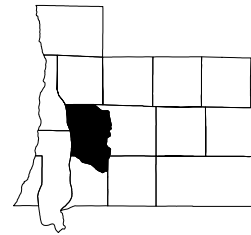


Forest Home Township  
Antrim County, Michigan



Forest Home Township  
TOTAL POPULATION

	1970 Census	1970-1980		1980-1990		1990-2000	
		1980 Census	Percent Change	1990 Census	Percent Change	2000 Census	Percent Change
FOREST HOME TOWNSHIP	1,080	1,333	23.4%	1,410	5.8%	1,858	31.8%
Antrim County	12,612	16,194	28.4%	18,185	12.3%	23,110	27.1%
Michigan	8,881,826	9,262,044	4.3%	9,295,297	0.4%	9,938,444	6.9%

Source: United States Bureau of the Census

FOREST HOME TOWNSHIP  
Percent of Total Antrim County Population:

1970	8.6%
1980	8.2%
1990	7.8%
2000	8.0%



Forest Home Township, Antrim County, Michigan

POPULATION BY SEX

	1970*	Percent of Total	1980*	Percent of Total	1990*	Percent of Total	2000	Percent of Total
Male	533	49.4%	634	47.6%	666	47.2%	907	48.8%
Female	547	50.6%	699	52.4%	744	52.8%	951	51.2%
Age 65 and over*:								
Male	53	53.5%	111	47.4%	145	50.3%	185	45.3%
Female	46	46.5%	123	52.6%	143	49.7%	223	54.7%

Source: United States Bureau of the Census

\* Derived from census sample data.

Forest Home Township, Antrim County, Michigan

POPULATION BY RACE

	White	Black	Native American	Asian/ Pacific Islander	Other	Hispanic (of any race)
1970	1,064	0	inc in "other"	inc in "other"	16	0
Percent of Total	98.5%	0.0%	---	---	1.5%	0.0%
1980	1,324	0	8	1	0	3
Percent of Total	99.3%	0.0%	0.6%	0.1%	0.0%	0.2%
1990	1,400	0	6	4	0	1
Percent of Total	99.3%	0.0%	0.4%	0.3%	0.0%	0.1%

	White alone	Black alone	Native American alone	Asian/Hawaiian/ Pacific Islander alone	Some other race alone	Two or more races	Hispanic (of any race)
2000	1,821	3	8	8	3	15	14
Percent of Total	98.0%	0.2%	0.4%	0.4%	0.2%	0.8%	0.8%

Source: United States Bureau of the Census

Note: 1970 includes Asian and Pacific Islander in "Other".

Note: Due to changes in data collection methods, race data from the 2000 Census cannot be compared to race data from prior censuses.



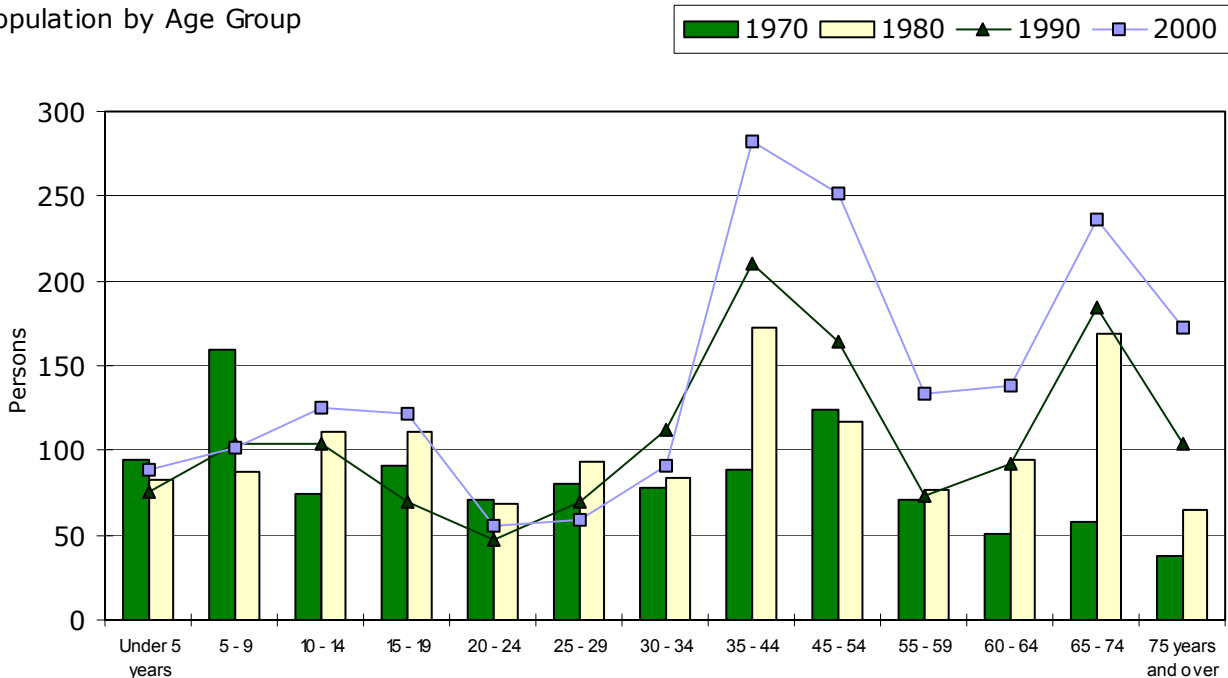
Forest Home Township, Antrim County, Michigan  
POPULATION BY AGE GROUP

Age Group	1970-1980		1980-1990		1990-2000		
	1970*	1980	Percent Change	1990	Percent Change	2000	Percent Change
Under 5 years	95	83	-12.6%	76	-8.4%	89	17.1%
5 - 9	160	87	-45.6%	104	19.5%	102	-1.9%
10 - 14	74	111	50.0%	104	-6.3%	125	20.2%
15 - 19	91	111	22.0%	70	-36.9%	122	74.3%
20 - 24	71	68	-4.2%	47	-30.9%	56	19.1%
25 - 29	80	93	16.3%	70	-24.7%	59	-15.7%
30 - 34	78	84	7.7%	112	33.3%	91	-18.8%
35 - 44	89	173	94.4%	210	21.4%	282	34.3%
45 - 54	124	117	-5.6%	164	40.2%	252	53.7%
55 - 59	71	77	8.5%	73	-5.2%	134	83.6%
60 - 64	51	95	86.3%	92	-3.2%	138	50.0%
65 - 74	58	169	191.4%	184	8.9%	236	28.3%
75 years and over	38	65	71.1%	104	60.0%	172	65.4%
TOTAL	1,080	1,333	23.4%	1,410	5.8%	1,858	31.8%
Median age	N/A	36.7		40.4		45.1	

Source: United States Bureau of the Census

\* Derived from census sample data.

Forest Home Township, Antrim County, Michigan  
Population by Age Group



Forest Home Township, Antrim County, Michigan  
MARITAL STATUS  
persons 15 years of age and over

	1970*			1980		
	Male	Female	Total	Male	Female	Total
Never married	87	87	174	106	89	195
Married except separated	312	348	660	362	365	727
Married but separated	0	10	10	2	5	7
Widowed	13	14	27	8	61	69
Divorced	4	0	4	25	29	54
Total	416	459	875	503	549	1,052
Percent married	75.0%	75.8%	75.4%	72.0%	66.5%	69.1%

	1990			2000**		
	Male	Female	Total	Male	Female	Total
Never married	95	74	169	148	96	244
Married except separated	382	377	759	525	524	1,049
Married but separated	7	6	13	3	9	12
Widowed	16	76	92	16	107	123
Divorced	36	57	93	39	81	120
Total	536	590	1,126	731	817	1,548
Percent married	71.3%	63.9%	67.4%	71.8%	64.1%	67.8%

Source: United States Bureau of the Census

\* 1970 data is persons 14 years of age and over and is derived from census sample data.

\*\* Census sample data.

Forest Home Township, Antrim County, Michigan  
HOUSEHOLDS

	1970-1980		1980-1990		1990-2000		
	1970	1980	Percent Change	1990	Percent Change	2000	Percent Change
Number of households	371	494	33.2%	574	16.2%	790	37.6%
Persons per household	2.9	2.7	-6.9%	2.5	-7.4%	2.4	-6.0%
Married couple families	N/A	358	N/A	372	3.9%	505	35.8%
--as a percent of total households	N/A	72.5%	N/A	64.8%	-10.6%	63.9%	-1.4%

Source: United States Bureau of the Census



Forest Home Township, Antrim County, Michigan  
 PERSONS IN HOUSEHOLD

	1970 Percent of Total Households	1980 Percent of Total Households	1970-1980 Absolute Change	1990 Percent of Total Households	1980-1990 Absolute Change	2000 Percent of Total Households	1990-2000 Absolute Change
One person	6.2%	16.4%	10.2%	22.5%	6.1%	25.7%	3.3%
Two persons	35.8%	41.7%	5.9%	41.3%	-0.4%	43.3%	2.1%
Three persons	17.0%	14.6%	-2.4%	13.6%	-1.0%	14.2%	0.6%
Four persons	17.3%	15.6%	-1.7%	14.8%	-0.8%	9.9%	-4.9%
Five persons	12.1%	7.9%	-4.2%	6.8%	-1.1%	5.2%	-1.6%
Six or more persons	11.6%	3.8%	-7.7%	1.0%	-2.8%	1.6%	0.6%

Source: United States Bureau of the Census

Forest Home Township, Antrim County, Michigan  
 NATIVITY AND PLACE OF BIRTH

	1970*	Percent of Total	1980*	Percent of Total	1990*	Percent of Total	2000*	Percent of Total
Native	1,080	100.0%	1,296	97.2%	1,390	98.6%	1,830	98.5%
--Born in state of residence	844	78.1%	1,057	79.3%	1,152	81.7%	1,489	80.1%
--Born in different state	223	20.7%	227	17.0%	230	16.3%	335	18.0%
--Born abroad, at sea, etc.	13	1.2%	12	0.9%	8	0.6%	6	0.3%
Foreign born	0	0.0%	37	2.8%	20	1.4%	28	1.5%
Total persons	1,080		1,333		1,410		1,858	

Source: United States Bureau of the Census

\* Derived from census sample data.



Forest Home Township, Antrim County, Michigan  
YEARS OF SCHOOL COMPLETED  
persons 25 years of age and over

	1970-1980		1980-1990		1990-2000		
	1970*	1980*	Percent Change	1990*	Percent Change	2000*	Percent Change
Less than 9th grade	71	86	21.1%	40	-53.5%	14	-65.0%
9th to 12th grade, no diploma	125	130	4.0%	109	-16.2%	105	-3.7%
High school graduate, no college	199	412	107.0%	291	-29.4%	437	50.2%
Some college through professional degree	194	381	96.4%	569	49.3%	809	42.2%
Total persons	589	1,009	71.3%	1,009	0.0%	1,365	35.3%
Percent high school graduates, no college	33.8%	40.8%		28.8%		32.0%	
Percent some college through professional degree	32.9%	37.8%		56.4%		59.3%	
Percent school dropouts	33.3%	21.4%		14.8%		8.7%	

Source: United States Bureau of the Census

\* Derived from census sample data.

Forest Home Township, Antrim County, Michigan  
ANNUAL AVERAGE LABOR FORCE STATISTICS

	1970 - 1980		1980 - 1990		1990 - 2000		
	1970	1980	Percent Change	1990	Percent Change	2000	Percent Change
Total Civilian Labor Force	550	600	9.1%	750	25.0%	925	23.3%
Employed	500	525	5.0%	675	28.6%	875	29.6%
Unemployed	50	75	50.0%	75	0.0%	50	-33.3%
			Absolute Change		Absolute Change		Absolute Change
Unemployment Rate	10.5%	12.2%	1.7%	9.0%	-3.2%	4.6%	-4.4%

Source: Michigan Dept. of Career Development/ESA/OLMI, Labor Market Analysis Section



Forest Home Township, Antrim County, Michigan  
INCOME

	1979		1989		1979-1989	1999 actual	1989-1999
	actual	...in 1999 dollars*	actual	...in 1999 dollars*	Percent Change**		Percent Change**
Median household income	\$16,533	\$37,939	\$27,784	\$37,329	-1.6%	\$40,980	9.8%
Median family income	\$18,007	\$41,322	\$31,354	\$42,126	1.9%	\$51,000	21.1%
Per capita income	\$7,335	\$16,832	\$12,632	\$16,972	0.8%	\$24,319	43.3%

Source: United States Bureau of the Census,  
\* Bureau of Labor Statistics, Consumer Price Index; Series CUUR0000SA0; U.S. city average; all items; Base Period: 1982-84=100--  
1979=72.6; 1989=124.0; 1999=166.6

\*\* Based on values adjusted to 1999 dollars.

