

Elk Rapids Township  
TOTAL POPULATION

	1970-1980		1980-1990		1990-2000		
	1970 Census	1980 Census	Percent Change	1990 Census	Percent Change	2000 Census	Percent Change
<b>ELK RAPIDS TOWNSHIP</b>	<b>1,631</b>	<b>2,086</b>	<b>27.9%</b>	<b>2,374</b>	<b>13.8%</b>	<b>2,741</b>	<b>15.5%</b>
Antrim County	12,612	16,194	28.4%	18,185	12.3%	23,110	27.1%
Michigan	8,881,826	9,262,044	4.3%	9,295,297	0.4%	9,938,444	6.9%

Source: United States Bureau of the Census

ELK RAPIDS TOWNSHIP  
Percent of Total Antrim County Population:

1970	12.9%
1980	12.9%
1990	13.1%
2000	11.9%



Elk Rapids Township, Antrim County, Michigan

POPULATION BY SEX

	1970*	Percent of Total	1980*	Percent of Total	1990*	Percent of Total	2000	Percent of Total
Male	792	48.6%	1,010	48.4%	1,156	48.7%	1,361	49.7%
Female	839	51.4%	1,076	51.6%	1,218	51.3%	1,380	50.3%
Age 65 and over*:								
Male	114	52.1%	145	42.5%	190	40.5%	268	44.7%
Female	105	47.9%	196	57.5%	279	59.5%	332	55.3%

Source: United States Bureau of the Census

\* Derived from census sample data.

Elk Rapids Township, Antrim County, Michigan

POPULATION BY RACE

	White	Black	Native American	Asian/ Pacific Islander	Other	Hispanic (of any race)
1970	1,620	0	inc in "other"	inc in "other"	11	0
Percent of Total	99.3%	0.0%	---	---	0.7%	0.0%
1980	2,042	0	30	6	8	24
Percent of Total	97.9%	0.0%	1.4%	0.3%	0.4%	1.2%
1990	2,314	3	39	4	14	34
Percent of Total	97.5%	0.1%	1.6%	0.2%	0.6%	1.4%

	White alone	Black alone	Native American alone	Asian/Hawaiian/ Pacific Islander alone	Some other race alone	Two or more races	Hispanic (of any race)
2000	2,677	6	22	11	11	14	52
Percent of Total	97.7%	0.2%	0.8%	0.4%	0.4%	0.5%	1.9%

Source: United States Bureau of the Census

Note: 1970 includes Asian and Pacific Islander in "Other".

Note: Due to changes in data collection methods, race data from the 2000 Census cannot be compared to race data from prior censuses.



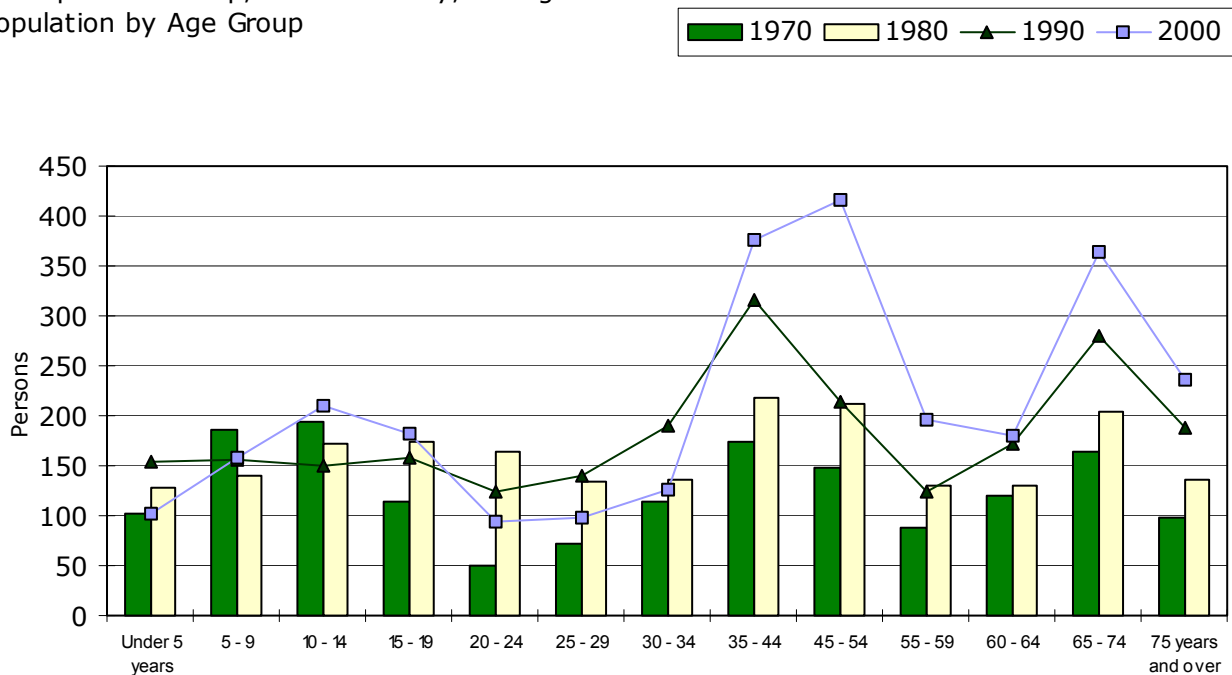
Elk Rapids Township, Antrim County, Michigan  
POPULATION BY AGE GROUP

Age Group	1970-1980		1980-1990		1990-2000		
	1970*	1980	Percent Change	1990	Percent Change	2000	Percent Change
Under 5 years	102	129	26.5%	155	20.2%	102	-34.2%
5 - 9	186	141	-24.2%	157	11.3%	158	0.6%
10 - 14	194	172	-11.3%	150	-12.8%	211	40.7%
15 - 19	115	175	52.2%	159	-9.1%	182	14.5%
20 - 24	51	165	223.5%	124	-24.8%	95	-23.4%
25 - 29	72	134	86.1%	141	5.2%	99	-29.8%
30 - 34	114	136	19.3%	190	39.7%	126	-33.7%
35 - 44	174	218	25.3%	316	45.0%	376	19.0%
45 - 54	149	213	43.0%	215	0.9%	416	93.5%
55 - 59	89	131	47.2%	125	-4.6%	196	56.8%
60 - 64	121	131	8.3%	173	32.1%	180	4.0%
65 - 74	165	205	24.2%	280	36.6%	364	30.0%
75 years and over	99	136	37.4%	189	39.0%	236	24.9%
TOTAL	1,631	2,086	27.9%	2,374	13.8%	2,741	15.5%
Median age	N/A	34.7		38.6		45.4	

Source: United States Bureau of the Census

\* Derived from census sample data.

Elk Rapids Township, Antrim County, Michigan  
Population by Age Group



Elk Rapids Township, Antrim County, Michigan

MARITAL STATUS

persons 15 years of age and over

	1970*			1980		
	Male	Female	Total	Male	Female	Total
Never married	106	89	195	201	140	341
Married except separated	372	339	711	509	511	1,020
Married but separated	0	4	4	19	12	31
Widowed	8	99	107	21	133	154
Divorced	9	32	41	49	49	98
Total	495	563	1,058	799	845	1,644
Percent married	75.2%	60.2%	67.2%	63.7%	60.5%	62.0%

	1990			2000**		
	Male	Female	Total	Male	Female	Total
Never married	208	157	365	261	139	400
Married except separated	583	587	1,170	726	749	1,475
Married but separated	8	14	22	6	10	16
Widowed	30	156	186	50	180	230
Divorced	69	100	169	82	120	202
Total	898	1,014	1,912	1,125	1,198	2,323
Percent married	64.9%	57.9%	61.2%	64.5%	62.5%	63.5%

Source: United States Bureau of the Census

\* 1970 data is persons 14 years of age and over and is derived from census sample data.

\*\* Census sample data.

Elk Rapids Township, Antrim County, Michigan

HOUSEHOLDS

	1970-1980		1980-1990		1990-2000		
	1970	1980	Percent Change	1990	Percent Change	2000	Percent Change
Number of households	505	782	54.9%	1,009	29.0%	1,206	19.5%
Persons per household	3.2	2.7	-15.6%	2.4	-11.1%	2.3	-5.8%
Married couple families	N/A	496	N/A	576	16.1%	676	17.4%
--as a percent of total households	N/A	63.4%	N/A	57.1%	-10.0%	56.1%	-1.8%

Source: United States Bureau of the Census



Elk Rapids Township, Antrim County, Michigan  
 PERSONS IN HOUSEHOLD

	1970 Percent of Total Households	1980 Percent of Total Households	1970-1980 Absolute Change	1990 Percent of Total Households	1980-1990 Absolute Change	2000 Percent of Total Households	1990-2000 Absolute Change
One person	23.4%	21.4%	-2.0%	26.6%	5.2%	29.4%	2.8%
Two persons	35.8%	36.8%	1.0%	39.1%	2.3%	42.5%	3.3%
Three persons	8.7%	15.5%	6.8%	16.5%	1.0%	12.6%	-3.8%
Four persons	9.9%	14.3%	4.4%	11.1%	-3.2%	9.4%	-1.7%
Five persons	11.7%	7.7%	-4.0%	4.5%	-3.2%	4.5%	0.0%
Six or more persons	10.5%	4.3%	-6.1%	2.3%	-2.1%	1.6%	-0.6%

Source: United States Bureau of the Census

Elk Rapids Township, Antrim County, Michigan  
 NATIVITY AND PLACE OF BIRTH

	1970*	Percent of Total	1980*	Percent of Total	1990*	Percent of Total	2000*	Percent of Total
Native	1,602	98.2%	2,023	97.0%	2,313	97.4%	2,663	97.2%
--Born in state of residence	1,360	83.4%	1,661	79.6%	1,827	77.0%	2,002	73.0%
--Born in different state	235	14.4%	351	16.8%	482	20.3%	638	23.3%
--Born abroad, at sea, etc.	7	0.4%	11	0.5%	4	0.2%	23	0.8%
Foreign born	29	1.8%	63	3.0%	61	2.6%	78	2.8%
Total persons	1,631		2,086		2,374		2,741	

Source: United States Bureau of the Census

\* Derived from census sample data.



Elk Rapids Township, Antrim County, Michigan  
 YEARS OF SCHOOL COMPLETED  
 persons 25 years of age and over

	1970-1980		1980-1990		1990-2000		
	1970*	1980*	Percent Change	1990*	Percent Change	2000*	Percent Change
Less than 9th grade	246	129	-47.6%	82	-36.4%	39	-52.4%
9th to 12th grade, no diploma	120	227	89.2%	242	6.6%	112	-53.7%
High school graduate, no college	404	668	65.3%	484	-27.5%	586	21.1%
Some college through professional degree	212	542	155.7%	821	51.5%	1,256	53.0%
Total persons	982	1,566	59.5%	1,629	4.0%	1,993	22.3%
Percent high school graduates, no college	41.1%	42.7%		29.7%		29.4%	
Percent some college through professional degree	21.6%	34.6%		50.4%		63.0%	
Percent school dropouts	37.3%	22.7%		19.9%		7.6%	

Source: United States Bureau of the Census

\* Derived from census sample data.

Elk Rapids Township, Antrim County, Michigan  
 ANNUAL AVERAGE LABOR FORCE STATISTICS

	1970 - 1980		1980 - 1990		1990 - 2000		
	1970	1980	Percent Change	1990	Percent Change	2000	Percent Change
Total Civilian Labor Force	575	1,100	91.3%	1,225	11.4%	1,550	26.5%
Employed	550	975	77.3%	1,150	17.9%	1,500	30.4%
Unemployed	25	125	400.0%	75	-40.0%	50	-33.3%
			Absolute Change		Absolute Change		Absolute Change
Unemployment Rate	6.2%	10.5%	4.3%	7.0%	-3.5%	3.6%	-3.4%

Source: Michigan Dept. of Career Development/ESA/OLMI, Labor Market Analysis Section



Elk Rapids Township, Antrim County, Michigan  
INCOME

	1979		1989		1979-1989	1989-1999	
	actual	...in 1999	actual	...in 1999	Percent Change**	1999 actual	Percent Change**
		dollars*		dollars*			
Median household income	\$16,488	\$37,836	\$23,832	\$32,019	-15.4%	\$36,250	13.2%
Median family income	\$19,058	\$43,734	\$28,529	\$38,330	-12.4%	\$48,450	26.4%
Per capita income	\$6,782	\$15,563	\$12,936	\$17,380	11.7%	\$21,970	26.4%

Source: United States Bureau of the Census,  
\* Bureau of Labor Statistics, Consumer Price Index; Series CUUR0000SA0; U.S. city average; all items; Base Period: 1982-84=100--  
1979=72.6; 1989=124.0; 1999=166.6

\*\* Based on values adjusted to 1999 dollars.

