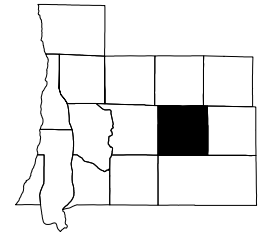


Chestonia Township
Antrim County, Michigan



Chestonia Township
TOTAL POPULATION

	1970 Census	1970-1980		1980-1990		1990-2000	
		1980 Census	Percent Change	1990 Census	Percent Change	2000 Census	Percent Change
CHESTONIA TOWNSHIP	368	433	17.7%	401	-7.4%	546	36.2%
Antrim County	12,612	16,194	28.4%	18,185	12.3%	23,110	27.1%
Michigan	8,881,826	9,262,044	4.3%	9,295,297	0.4%	9,938,444	6.9%

Source: United States Bureau of the Census

CHESTONIA TOWNSHIP
Percent of Total Antrim County Population:

1970	2.9%
1980	2.7%
1990	2.2%
2000	2.4%



Chestonia Township, Antrim County, Michigan

POPULATION BY SEX

	1970*	Percent of Total	1980*	Percent of Total	1990*	Percent of Total	2000	Percent of Total
Male	169	45.9%	222	51.3%	194	48.4%	274	50.2%
Female	199	54.1%	211	48.7%	207	51.6%	272	49.8%
Age 65 and over*:								
Male	23	56.1%	23	59.0%	24	40.0%	31	49.2%
Female	18	43.9%	16	41.0%	36	60.0%	32	50.8%

Source: United States Bureau of the Census

* Derived from census sample data.

Chestonia Township, Antrim County, Michigan

POPULATION BY RACE

	White	Black	Native American	Asian/ Pacific Islander	Other	Hispanic (of any race)
1970	368	0	inc in "other"	inc in "other"	0	0
Percent of Total	100.0%	0.0%	---	---	0.0%	0.0%
1980	431	0	2	0	0	0
Percent of Total	99.5%	0.0%	0.5%	0.0%	0.0%	0.0%
1990	399	1	1	0	0	0
Percent of Total	99.5%	0.2%	0.2%	0.0%	0.0%	0.0%

	White alone	Black alone	Native American alone	Asian/Hawaiian/ Pacific Islander alone	Some other race alone	Two or more races	Hispanic (of any race)
2000	504	5	12	6	2	17	3
Percent of Total	92.3%	0.9%	2.2%	1.1%	0.4%	3.1%	0.5%

Source: United States Bureau of the Census

Note: 1970 includes Asian and Pacific Islander in "Other".

Note: Due to changes in data collection methods, race data from the 2000 Census cannot be compared to race data from prior censuses.



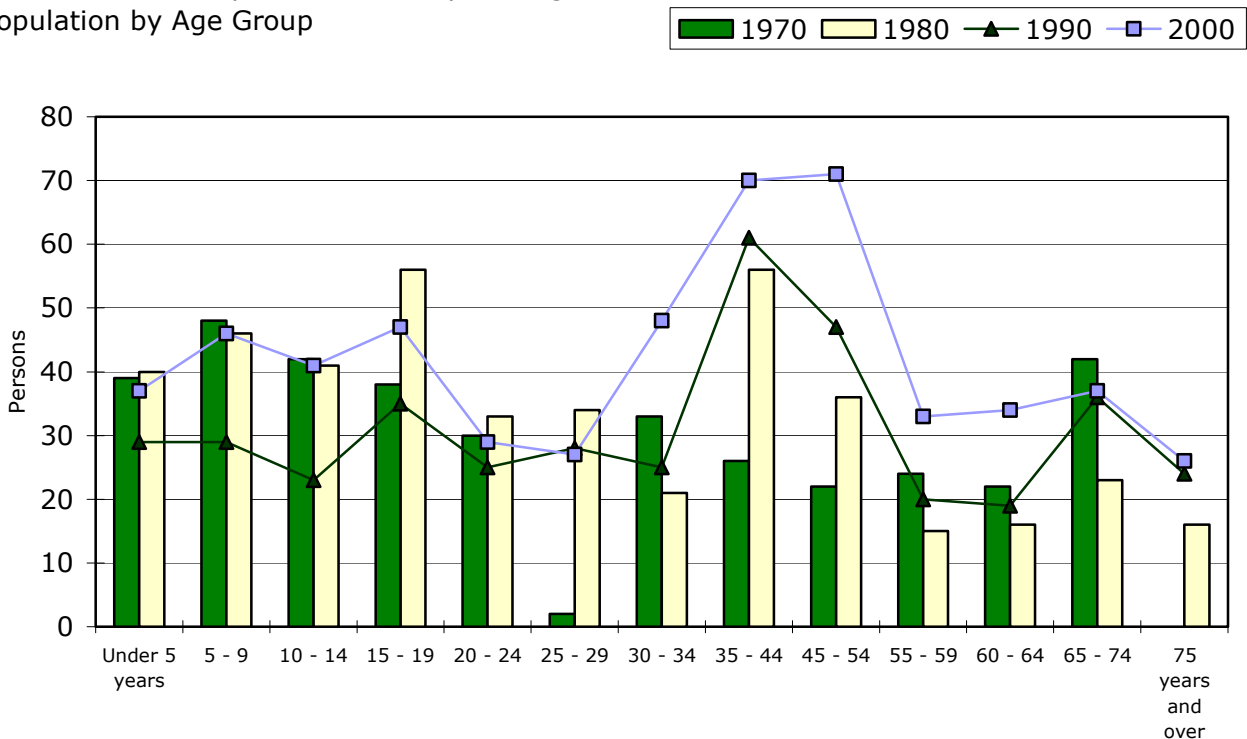
Chestonia Township, Antrim County, Michigan
POPULATION BY AGE GROUP

Age Group	1970-1980		1980-1990		1990-2000		
	1970*	1980	Percent Change	1990	Percent Change	2000	Percent Change
Under 5 years	39	40	2.6%	29	-27.5%	37	27.6%
5 - 9	48	46	-4.2%	29	-37.0%	46	58.6%
10 - 14	42	41	-2.4%	23	-43.9%	41	78.3%
15 - 19	38	56	47.4%	35	-37.5%	47	34.3%
20 - 24	30	33	10.0%	25	-24.2%	29	16.0%
25 - 29	2	34	1600.0%	28	-17.6%	27	-3.6%
30 - 34	33	21	-36.4%	25	19.0%	48	92.0%
35 - 44	26	56	115.4%	61	8.9%	70	14.8%
45 - 54	22	36	63.6%	47	30.6%	71	51.1%
55 - 59	24	15	-37.5%	20	33.3%	33	65.0%
60 - 64	22	16	-27.3%	19	18.8%	34	78.9%
65 - 74	42	23	-45.2%	36	56.5%	37	2.8%
75 years and over	0	16	--	24	50.0%	26	8.3%
TOTAL	368	433	17.7%	401	-7.4%	546	36.2%
Median age	N/A	25.1		36.0		34.8	

Source: United States Bureau of the Census

* Derived from census sample data.

Chestonia Township, Antrim County, Michigan
Population by Age Group



Chestonia Township, Antrim County, Michigan

MARITAL STATUS

persons 15 years of age and over

	1970*			1980		
	Male	Female	Total	Male	Female	Total
Never married	7	19	26	41	37	78
Married except separated	96	102	198	99	100	199
Married but separated	0	0	0	1	1	2
Widowed	0	10	10	3	10	13
Divorced	0	0	0	6	8	14
Total	103	131	234	150	156	306
Percent married	93.2%	77.9%	84.6%	66.0%	64.1%	65.0%

	1990			2000**		
	Male	Female	Total	Male	Female	Total
Never married	35	29	64	45	43	88
Married except separated	106	107	213	111	114	225
Married but separated	0	1	1	2	2	4
Widowed	3	15	18	6	12	18
Divorced	14	10	24	35	27	62
Total	158	162	320	199	198	397
Percent married	67.1%	66.0%	66.6%	55.8%	57.6%	56.7%

Source: United States Bureau of the Census

* 1970 data is persons 14 years of age and over and is derived from census sample data.

** Census sample data.

Chestonia Township, Antrim County, Michigan

HOUSEHOLDS

	1970-1980		1980-1990		1990-2000		
	1970	1980	Percent Change	1990	Percent Change	2000	Percent Change
Number of households	101	131	29.7%	147	12.2%	199	35.4%
Persons per household	3.6	3.3	-8.3%	2.7	-18.2%	2.7	1.5%
Married couple families	N/A	97	N/A	98	1.0%	116	18.4%
--as a percent of total households	N/A	74.0%	N/A	66.7%	-10.0%	58.3%	-12.6%

Source: United States Bureau of the Census



Chestonia Township, Antrim County, Michigan
 PERSONS IN HOUSEHOLD

	1970 Percent of Total Households	1980 Percent of Total Households	1970-1980 Absolute Change	1990 Percent of Total Households	1980-1990 Absolute Change	2000 Percent of Total Households	1990-2000 Absolute Change
One person	5.9%	17.6%	11.6%	19.0%	1.5%	21.7%	2.6%
Two persons	55.4%	26.0%	-29.5%	38.1%	12.1%	31.7%	-6.3%
Three persons	5.0%	14.5%	9.6%	14.3%	-0.2%	15.3%	1.1%
Four persons	0.0%	17.6%	17.6%	16.3%	-1.2%	16.9%	0.6%
Five persons	10.9%	13.7%	2.8%	6.8%	-6.9%	9.5%	2.7%
Six or more persons	22.8%	10.7%	-12.1%	5.4%	-5.2%	4.8%	-0.7%

Source: United States Bureau of the Census

Chestonia Township, Antrim County, Michigan
 NATIVITY AND PLACE OF BIRTH

	1970*	Percent of Total	1980*	Percent of Total	1990*	Percent of Total	2000*	Percent of Total
Native	368	100.0%	428	98.8%	401	100.0%	539	98.9%
--Born in state of residence	348	94.7%	372	85.9%	334	83.3%	470	86.2%
--Born in different state	20	5.3%	54	12.5%	63	15.7%	62	11.4%
--Born abroad, at sea, etc.	0	0.0%	2	0.5%	4	1.0%	7	1.3%
Foreign born	0	0.0%	5	1.2%	0	0.0%	6	1.1%
Total persons	368		433		401		545	

Source: United States Bureau of the Census

* Derived from census sample data.



Chestonia Township, Antrim County, Michigan
YEARS OF SCHOOL COMPLETED
persons 25 years of age and over

	1970-1980		1980-1990		1990-2000		
	1970*	1980*	Percent Change	1990*	Percent Change	2000*	Percent Change
Less than 9th grade	56	65	16.1%	29	-55.4%	29	0.0%
9th to 12th grade, no diploma	39	57	46.2%	46	-19.3%	58	26.1%
High school graduate, no college	53	149	181.1%	140	-6.0%	161	15.0%
Some college through professional degree	22	23	4.5%	45	95.7%	98	117.8%
Total persons	170	294	72.9%	260	-11.6%	346	33.1%
Percent high school graduates, no college	31.2%	50.7%		53.8%		46.5%	
Percent some college through professional degree	12.9%	7.8%		17.3%		28.3%	
Percent school dropouts	55.9%	41.5%		28.8%		25.1%	

Source: United States Bureau of the Census

* Derived from census sample data.

Chestonia Township, Antrim County, Michigan
ANNUAL AVERAGE LABOR FORCE STATISTICS

	1970 - 1980		1980 - 1990		1990 - 2000		
	1970	1980	Percent Change	1990	Percent Change	2000	Percent Change
Total Civilian Labor Force	175	175	0.0%	175	0.0%	225	28.6%
Employed	125	150	20.0%	150	0.0%	200	33.3%
Unemployed	50	25	-50.0%	25	0.0%	25	0.0%
			Absolute Change		Absolute Change		Absolute Change
Unemployment Rate	23.4%	13.8%	-9.6%	18.6%	4.8%	10.0%	-8.6%

Source: Michigan Dept. of Career Development/ESA/OLMI, Labor Market Analysis Section



Chestonia Township, Antrim County, Michigan

INCOME

	1979		1989		1979-1989	1999 actual	1989-1999
	actual	...in 1999 dollars*	actual	...in 1999 dollars*	Percent Change**		Percent Change**
Median household income	\$15,000	\$34,421	\$14,479	\$19,453	-43.5%	\$37,344	92.0%
Median family income	\$16,058	\$36,849	\$20,833	\$27,990	-24.0%	\$37,656	34.5%
Per capita income	\$4,208	\$9,656	\$7,882	\$10,590	9.7%	\$13,094	23.6%

Source: United States Bureau of the Census,

* Bureau of Labor Statistics, Consumer Price Index; Series CUUR0000SA0; U.S. city average; all items; Base Period: 1982-84=100--1979=72.6; 1989=124.0; 1999=166.6

** Based on values adjusted to 1999 dollars.

