

Antrim County Groundwater Contours & Wells Map 3-9

Antrim County, Michigan Groundwater Contours & Wells Map 3-9



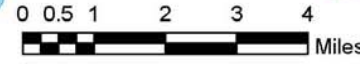
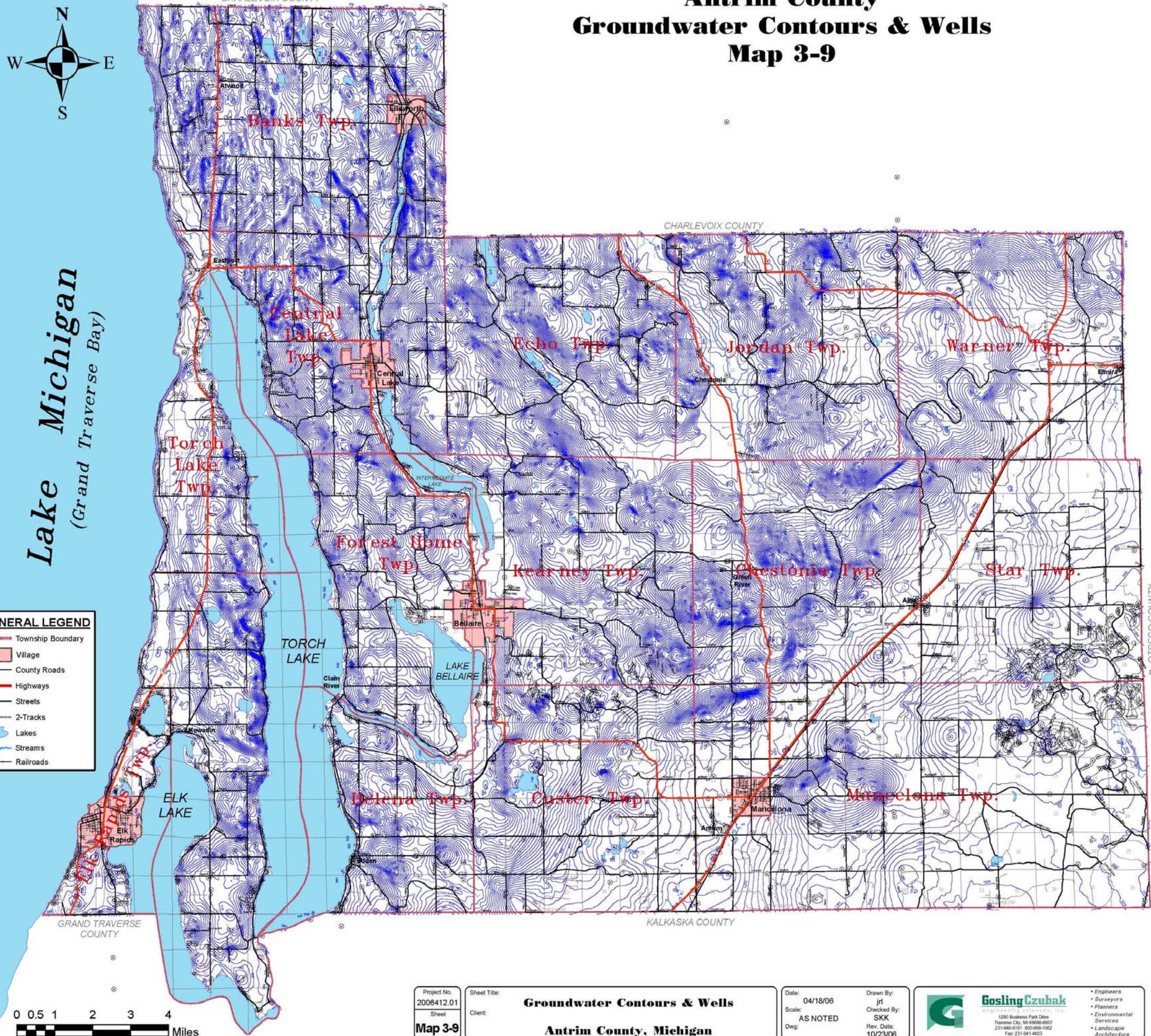
Lake Michigan
(Grand Traverse Bay)

GENERAL LEGEND

- Township Boundary
- Village
- County Roads
- Highways
- Streets
- 2-Tracks
- Lakes
- Streams
- Railroads

**Groundwater Contours
and Water Wells**

- ~ Groundwater Contours
- o Water Wells



Project No.
2006412.01
Sheet
Map 3-9

Sheet Title:
Groundwater Contours & Wells
Client:
Antrim County, Michigan

Date: 04/18/06
Scale: AS NOTED
Dwg:
Drawn By: jrl
Checked By: SKK
Rev. Date: 10/23/06

Gosling Czubak
Engineering & Architecture, Inc.
1300 Business Park Drive
Traverse City, MI 49780-0007
231-946-8191 800-966-1092
Fax: 231-941-4803

- Engineers
- Surveyors
- Planners
- Environmental Services
- Landscape Architecture

SOURCE:
STATE OF MICHIGAN
GIS DATA
CENTER FOR GEOGRAPHIC INFORMATION
DEPARTMENT OF INFORMATION TECHNOLOGY
ANTRIM COUNTY