

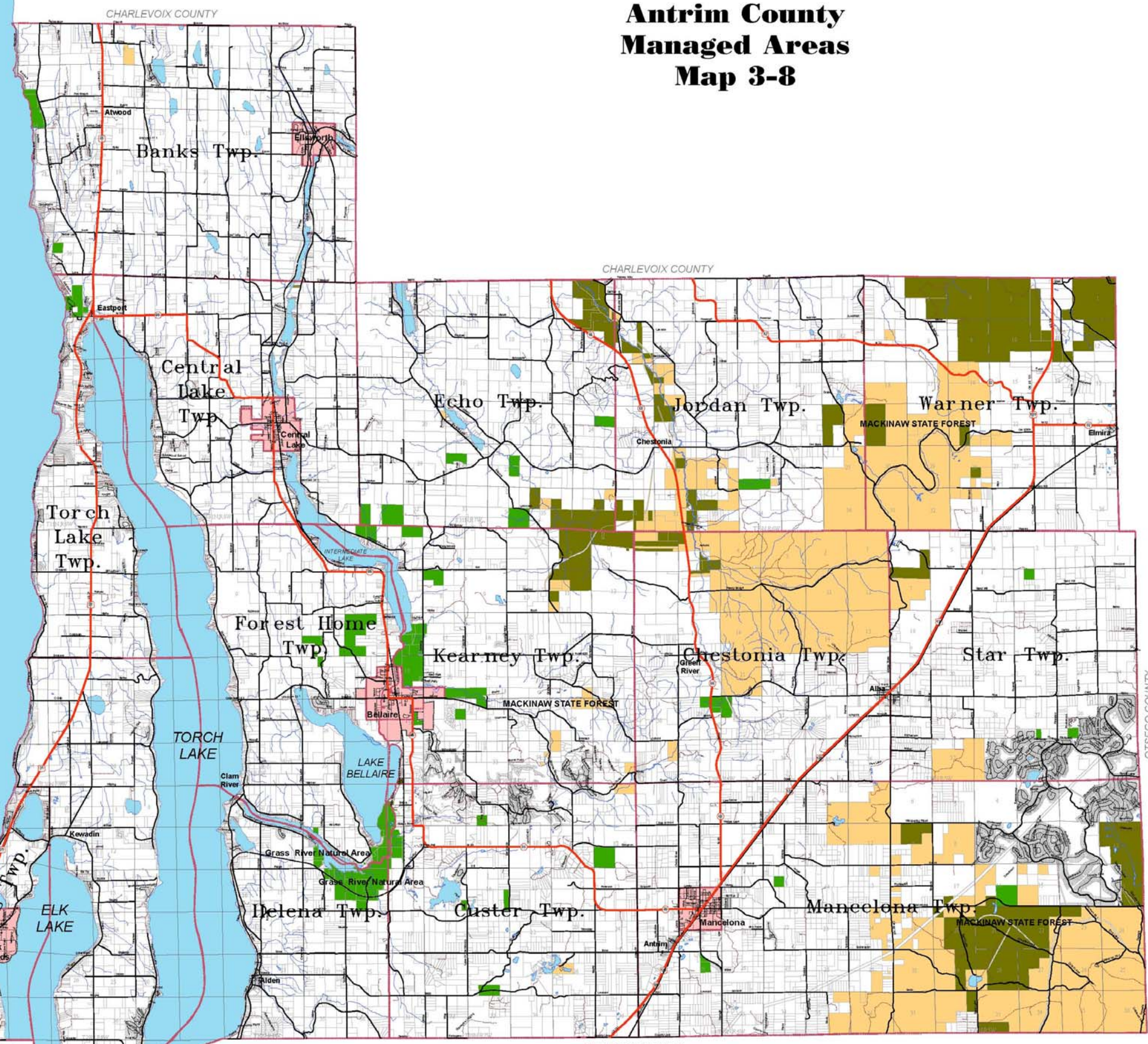
Antrim County Managed Areas Map 3-8

Antrim County, Michigan Managed Areas Map 3-8

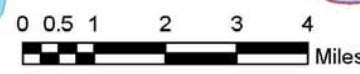


Lake Michigan
(Grand Traverse Bay)

- GENERAL LEGEND**
- Township Boundary
 - Village
 - County Roads
 - Highways
 - Streets
 - 2-Tracks
 - Lakes
 - Streams
 - Railroads



- Managed Areas**
- Antrim County
 - Department of Natural Resources
 - State of Michigan



Project No. 2006412.01	Sheet Title: Managed Areas	Date: 04/18/06	Drawn By: jrl
Sheet Map 3-8	Client: Antrim County, Michigan	Scale: AS NOTED	Checked By: SKK
		Dwg:	Rev. Date: 10/25/06

Gosling Czubak
Engineering & Architecture, Inc.
1300 Business Park Drive
Traverse City, MI 49780-0007
231-946-8191 800-966-1092
Fax: 231-941-4003

- Engineers
- Surveyors
- Planners
- Environmental Services
- Landscape Architecture

SOURCES:
ANTRIM COUNTY PLANNING
LIAA - LAND INFORMATION ACCESS ASSOCIATION
STATE OF MICHIGAN
GIS DATA
CENTER FOR GEOGRAPHIC INFORMATION
DEPARTMENT OF INFORMATION TECHNOLOGY
ANTRIM COUNTY