

Antrim County Percent Slope Map 3-2

Antrim County, Michigan Percent Slope Map 3-2



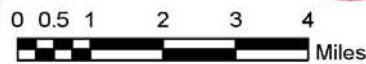
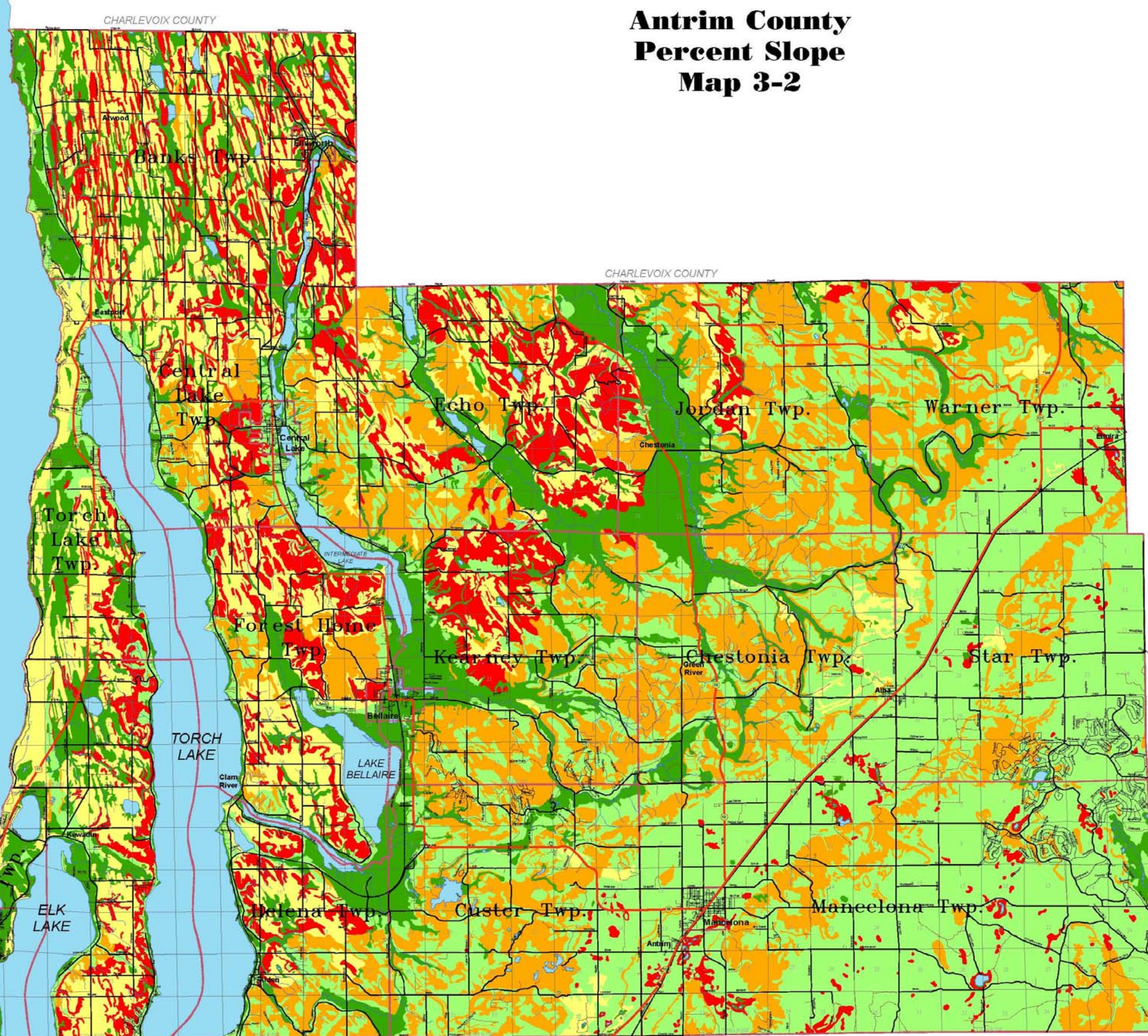
Lake Michigan
(Grand Traverse Bay)

GENERAL LEGEND

- Township Boundary
- Village
- County Roads
- Highways
- Streets
- 2-Tracks
- Lakes
- Streams
- Railroads

Percent Slope

- 0% - 2.0% slope
- 2.1% - 5.0% slope
- 5.1% - 12.0% slope
- 12.1% - 16.0% slope
- 16.1% - 26.0% slope



Project No.
2006412.01
Sheet
Map 3-2

Sheet Title:
Percent Slope
Client:
Antrim County, Michigan

Date:
04/18/06
Scale:
AS NOTED
Dwg:
Drawn By:
jrl
Checked By:
SKK
Rev. Date:
10/23/06

Gosling Czubak
ENGINEERING ARCHITECTURE INC.
1280 Business Park Drive
Traverse City, MI 49786-8007
231-946-9191 800-968-1062
Fax: 231-941-4853

- Engineers
- Surveyors
- Planners
- Environmental Services
- Landscape Architecture

SOURCES:
LIAA - LAND INFORMATION ACCESS ASSOCIATION
STATE OF MICHIGAN
GIS DATA
CENTER FOR GEOGRAPHIC INFORMATION
DEPARTMENT OF INFORMATION TECHNOLOGY
ANTRIM COUNTY