

Antrim County Land Use / Land Cover 1978 Level II Map 2-1

Antrim County, Michigan Land Use / Land Cover 1978 Level II Map 2-1

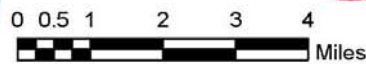
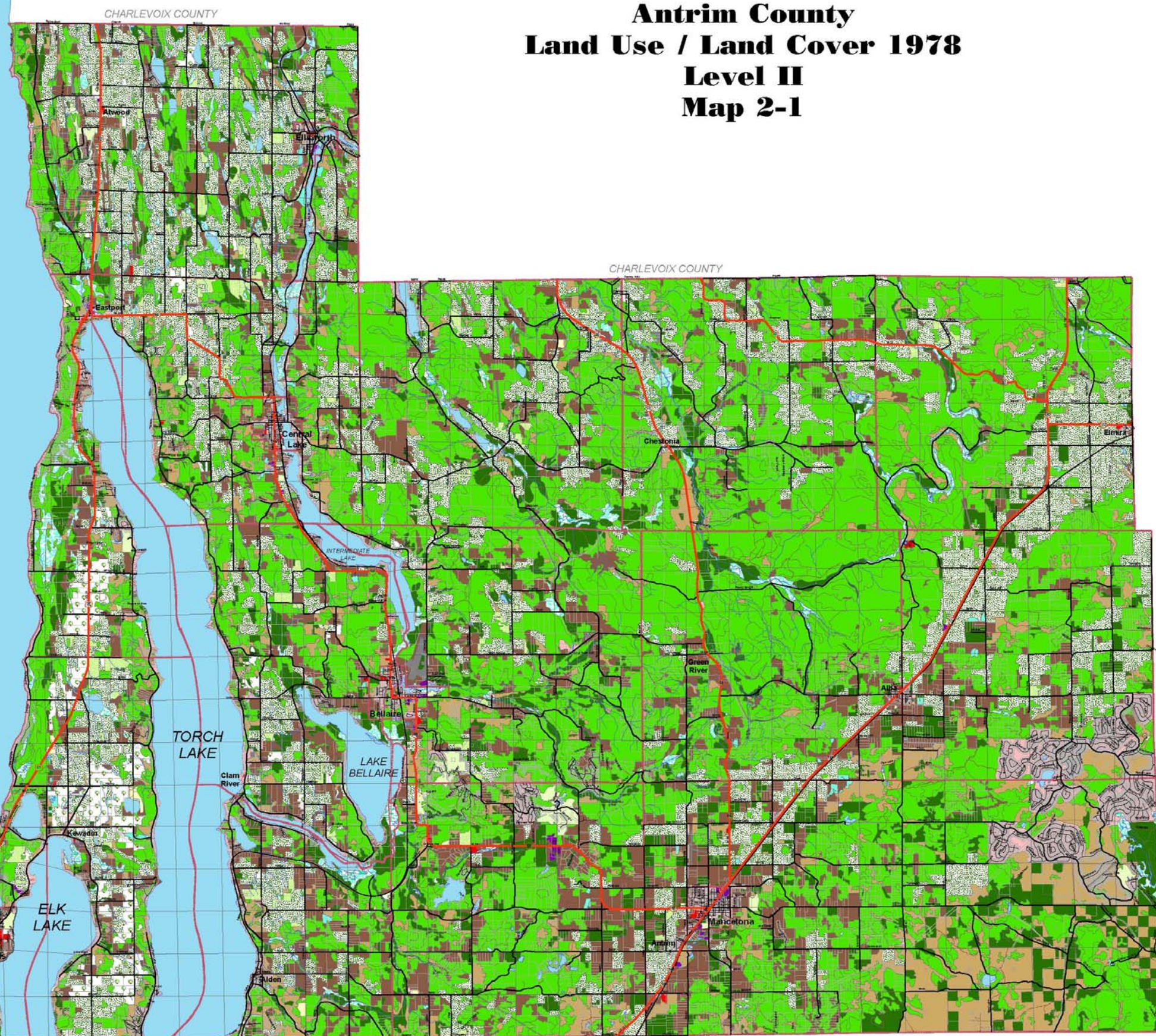


Lake Michigan
(Grand Traverse Bay)

- GENERAL LEGEND**
- Township Boundary
 - Village
 - County Roads
 - Highways
 - Streets
 - 2-Tracks
 - Lakes
 - Streams
 - Railroads

Land Use / Land Cover

- Residential
- Commercial / Service
- Industrial
- Transportation, Communications, Utilities
- Extractive
- Open / other
- Crop Land
- Orchard, Vineyard, Horticulture
- Feedlots
- Permanent pasture
- Other Agriculture
- Herbaceous field
- Shrub plants in field
- Deciduous Forest
- Coniferous
- Forested Wetlands
- Non-forested Wetlands
- Beaches / Riverbanks
- Sand dunes



Project No.
2006412.01
Sheet
Map 2-1

Sheet Title:
**Land Use / Land Cover 1978
Level II
Antrim County, Michigan**

Date: 04/18/06
Scale: AS NOTED
Dwg:
Drawn By: jrl
Checked By: SKK
Rev. Date: 10/16/06

Gosling Czubak
ENGINEERING ARCHITECTURE, INC.
1280 Business Park Drive
Traverse City, MI 49786-8007
231-946-9191 800-968-1062
Fax: 231-941-4803

- Engineers
- Surveyors
- Planners
- Environmental Services
- Landscape Architecture

SOURCE:
STATE OF MICHIGAN
GIS DATA
CENTER FOR GEOGRAPHIC INFORMATION
DEPARTMENT OF INFORMATION TECHNOLOGY
ANTRIM COUNTY